



*Aristata*TM
Series



Recycling has never looked so simply beautiful.

You think you know someone...but what if they do something that's completely out of the ordinary?

The Aristata Series is a departure from what you think you know about Busch Systems. We've been designing and manufacturing quality containers for thirty years and have been a trusted source for recycling and waste solutions for clients around the globe. We've brought you recycling bins that are durable, functional and practical.

Now...we are also bringing you unparalleled style.

Our dedicated Design Team has spent countless hours crafting the look and feel of the stunning new Aristata Series. Each finish and detail was meticulously chosen to be on-trend with today's modern interiors, which has created recycling and waste bins that blend seamlessly into any space.

Comprised of fifteen striking designs in a variety of sophisticated hues, the Aristata Series maintains all of the practicality you would expect from a Busch Systems product.

Customizable lids and labeling options are available for personalization and the entire series will suit every combination of recycling streams.

Recycling has never looked so simply beautiful.

Tier I Slate*

Sophisticated.

Tier one of the Aristata Series comprises of the simple and state-of-the-art slate collection of our high-end line of waste and recycling containers. The slate body, complemented with the colored opening truly refines the recycling experience.

Stock Finish:



Slate



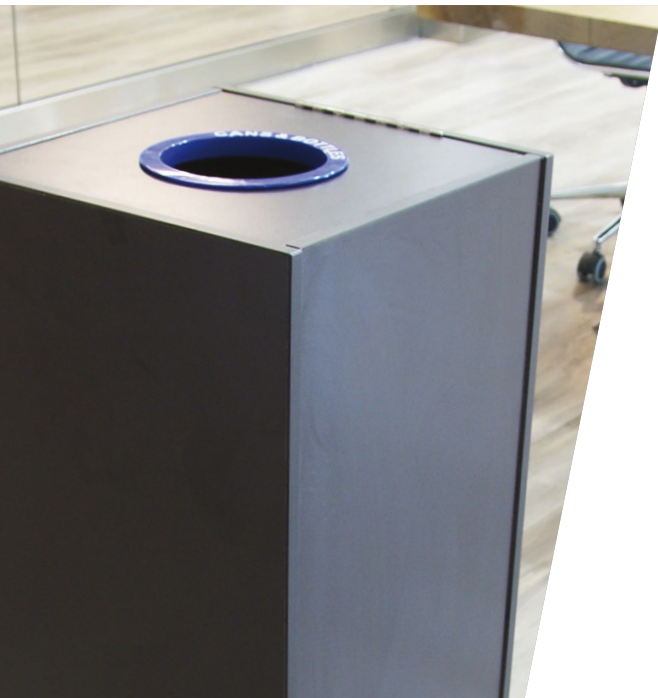
Aristata

Tier I



Single

15"L x 15"W x 30"H



All tiers come standard with ergonomic liners.

Tier II Slate, Black, Glacier

Bold.

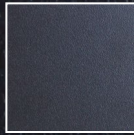
The second tier of the Aristata Series is composed of the most modern and minimalistic recycling and waste containers. These bins can stand out or simply compliment any contemporary or modern space.

Stock Finish:



Slate

Custom Finishes:



Black



Glacier

Single, Double or Triple streams available for Tiers II to V.
All tiers come standard with ergonomic liners.



Tier II

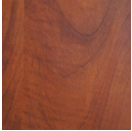


Tier III Mid-Summer Flame, Coco Fudge, Portobello

Adventurous.

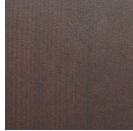
The third tier of the Aristata Series is reserved for containers designed to stand out. These venturesome bins are assembled to make a statement and ensure everyone knows exactly where the recycling and waste containers are.

Stock Finish:



Mid-Summer
Flame

Custom Finishes:



Coco
Fudge



Portobello

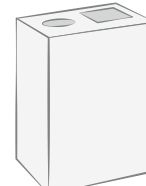


Tier III



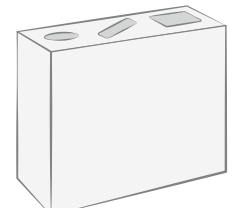
Single

15"L x 15"W x 30"H



Double

26 ¹⁵/₁₆"L x 15"W x 30"H



Triple

39 ¹⁵/₁₆"L x 15"W x 30"H

All tiers come standard with ergonomic liners.

Tier IV
Western Breeze,
Harvest Leaves,
Brushed Nickel

Mastery.

The fourth tier of the Aristata Series is designated for textured, horizontal cross-grain finishes. These high-end patterns add depth and capture attention in any space.

Single, Double or Triple streams available for Tiers II to V.
All tiers come standard with ergonomic liners.



Stock Finish:



Western
Breeze

Custom Finishes:



Harvest
Leaves



Brushed
Nickel

Tier IV



Tier V

Euroline, Oro Bella,
Snowy Pearl, Antracita Gloss,
Guayana, Olmo Mist

Prestigious.

The fifth tier of the Aristata Series belongs to the most illustrious group of recycling containers. The five distinctive finishes in this tier are of the highest quality in the market. These containers will, without a doubt, be a focal point in your space.



Stock Finish:

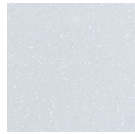


Euroline

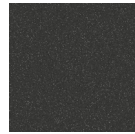
Custom Finishes:



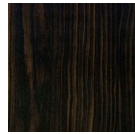
Oro Bella



Snowy
Pearl



Antracita
Gloss



Guayana



Olmo Mist

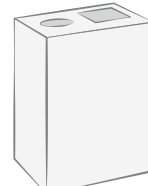
CA

Tier V



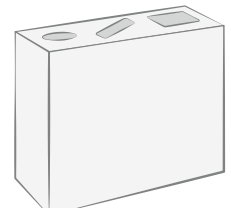
Single

15"L x 15"W x 30"H



Double

26 ¹⁵/₁₆"L x 15"W x 30"H



Triple

39 ¹⁵/₁₆"L x 15"W x 30"H

All tiers come standard with ergonomic liners.



Aristata[™]
Series

30  **BUSCH SYSTEMS**
Recycling Made Simple

info@buschsystems.com | 1-800-565-9931 | buschsystems.com