

# RECYCLING & WASTE CONTAINERS

# 2015/2016



RECYCLING  
MADE  
SIMPLE.

## A MESSAGE FROM OUR PRESIDENT & CEO



**When** I founded Busch Systems in 1985, it was because I had a passion for the environment and the exciting developments that were occurring in the recycling industry. Thirty years later, our commitment to the environment and sustainability efforts have become central to our corporate culture. Making the

right choices takes inspiration, education, innovation and participation. We recognize that by constantly striving to reach a higher standard of environmental responsibility, we can encourage our colleagues, suppliers and clients to do the same and look forward to celebrating our successes together.

*Craig Busch*

## ABOUT US

Who are we? We're an innovative, passionate, knowledgeable group of individuals who treat our clients and each other with respect and enthusiasm. We're a company who thinks about the environment every day and designs, recommends and customizes waste and recycling solutions for

collection programs across all industries. We're dedicated to our philanthropic efforts and activities on and off the company clock. Every day we try our best to say 'thank you' to our colleagues and customers, while sharing a laugh too, that's just who WE are!



# TABLE OF CONTENTS



## High-end, high-quality recycling & waste containers.

Browse our most favorite bins for your specific environment!

### DESIGNER 5

**KOVAH** 6 **ARISTATA** 7-8 **EVOLVE** 9-10 **BOKA** 11-12  
**INFINITE** 13

### INDOOR 14

**WASTE WATCHER** 15-17 **PAVILION** 18 **SMART SORT** 19  
**DUETT** 20 **BILLI BOX** 21 **MULTI RECYCLER** 22 **CURVE** 23  
**UPRIGHT** 24 **DESKSIDE** 25 **RECYCLING & WASTE BASKET** 26  
**HANGING WASTE BASKET** 27 **DIVERSITY** 28

### OUTDOOR 29

**CONCOURSE** 30 **UPTOWN** 31-32 **SUPER SORTER** 33  
**WAVE** 34 **SENTRY** 35 **CURBSIDE** 36 **TRC | BARREL TOPPER** 37  
**CARTS** 38

### SPECIALTY 39

**COFFEE CUP RECYCLER | BATTERY BIN** 40  
**KITCHEN COMPOSTER | CELL PHONE RECYCLER** 41  
**DIAPER PAIL | SOIL SAVER** 42 **SHREDINATOR | PERSONAL**  
**DOCUMENT CONTAINER** 43 **4 WHEEL SECURE CART |**  
**DURAFLEX** 44

### PROMOTION 45

**MINI MULTI PURPOSE | MINI ROLL-OUT CART**  
**MINI CURBSIDE | MINI 28 QUART**  
**RECYCLING BOX KEYCHAIN**



# Customization

## When it's time to turn OUR bins into YOUR bins...we're here to help!

Every waste & recycling program has different needs and requirements and we can assist you in showcasing your brand in the best way possible. From bright and bold to sleek and subtle, we have the tools to make your containers unique.

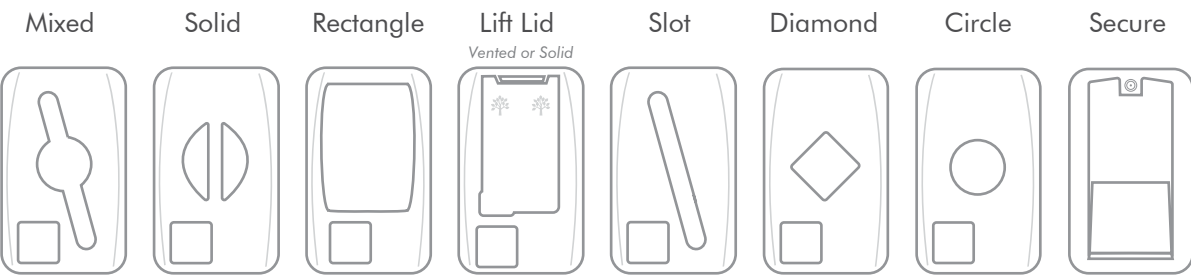
**Custom Labels**  
Not satisfied with our standard labels? We can design custom labels to suit your waste & recycling requirements.

**Custom Signs**  
Brand your signage to be consistent with your company brand.

**Custom Graphics**  
We can customize any bin! Add more graphics for a specific event or your program icons for more exposure.

## Put A Lid On It

Contain yourselves – we have lids for one and lids for all!



## Colour Me Happy!

Available stock colours (Custom colours available - Minimum orders may be required).



## Logo Love

Need a new logo for your waste & recycling program? We can assist you with some creative designs to help tell your story.

# WHY BUSCH?



## Manufacturers **Direct Pricing**

Get the best pricing on our containers, from us!

## BUSCH IS **Customization** >>

See Page 3

## OUR BINS ARE **100%** Recyclable



## made in **North America**

We're a company founded on environmentally-friendly products all proudly made in North America.



## **Experience**

Over 100 years of combined recycling program experience. Simply put, we know our stuff!

## **Beautiful** and **Cost-effective**



KOVAH | 6

ARISTATA | 7 - 8

EVOLVE | 9 - 10

BOKA | 11 - 12

INFINITE | 13

# DESIGNER

We believe that recycling and waste containers can be as beautiful as they are functional. The bins that are included in our Designer Collection make sustainability stylish. Clean lines in sophisticated finishes compliment any space where practical still needs to be polished. With a multitude of additional options such as signage, sizes and openings, this striking group of bins is sure to have a place in any waste and recycling program.

 TOLL FREE **1.800.565.9931**  VISIT **[buschsystems.com](http://buschsystems.com)**



Kovah™

Stylishly Appointed  
And Sustainably  
Approved



#### SPECIFICATIONS:

**Capacity:** 30 Gallon (2 x 15 Gallon)

**Dimensions:** 16¼"D x 29⅞"W x 29⅞"H

**Material:** Stainless steel body, scratch resistant, composite lid

**Optional Accessories:** Body Labels

#### STOCK FINISH:



*This bin has 2 separate liners to ensure a clean sort!*

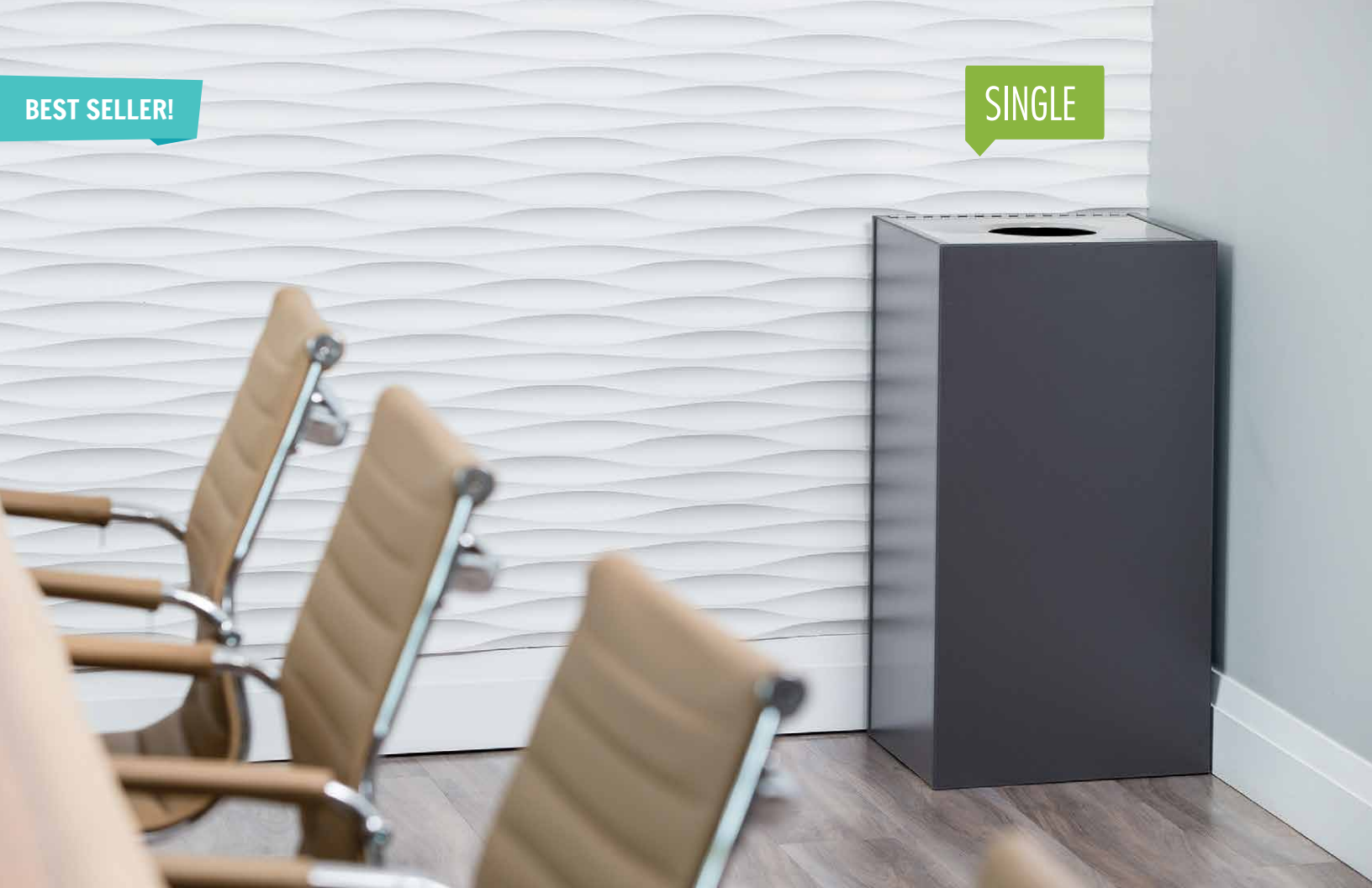
#### FEATURES:

- Built for high-end office collection
- 20-gauge stainless steel
- Modern & sleek design
- Rigid recycled plastic liners
- Scratch-resistant composite lid



BEST SELLER!

SINGLE



DOUBLE

*\*Available Finish Shown*







TRIPLE

\*Available Finish Shown

Patent Pending



SPECIFICATIONS:

**Capacity:** 23, 43, 63 Gallon

**Dimensions:**

23G: 15"D x 15"W x 30"H

43G: 15"D x 26<sup>15</sup>/<sub>16</sub>"W x 30"H

63G: 15"D x 39<sup>15</sup>/<sub>16</sub>"W x 30"H

**Base Material:** Wood Composite

**Lid Material:** Stainless Steel

STOCK FINISHES:

Tier I ● SLATE

Tier II ● SLATE

Tier III ● MID-SUMMER FLAME

Tier IV ● WESTERN BREEZE

Tier V ● EUROLINE

AVAILABLE FINISHES:

*Minimum order required.*

● BLACK ● GLACIER

● COCO FUDGE ● PORTOBELLO

● HARVEST LEAVES ● BRUSHED NICKEL

● SNOWY PEARL ● ORO BELLA ● ANTRACITA GLOSS

● OLMO MIST ● GUAYANA

FEATURES:

- Built for designers & architects
- 15 finishes across 5 tiers
- Custom labeling & decaling available
- Ergonomic rigid plastic liners



HOT PRODUCT!



SINGLE



DOUBLE



**eVolve**<sup>™</sup>  
SERIES

Reshape Collection  
Make An Impact

TRIPLE



Patent Pending

#### SPECIFICATIONS:

##### **ELLIPSE**

DIMENSIONS: 20"D x 20"W x 30"H

CAPACITY: 36 Gallon

##### **CUBE**

DIMENSIONS: 20"D x 20"W x 30"H

CAPACITY: 50 Gallon

#### STOCK FINISH:



STAINLESS  
STEEL



BLACK (BODY)

#### OPTIONAL KITS:

- Magnetic Connection Kit
- Sign Frame Kit
- Wheel Caster Kit
- Lunch Tray Kit

#### FEATURES:

- Unlimited variations available
- Modern & sleek design
- Easy-to-manage pivoted bag retention system
- Large capacity is perfect for high-traffic areas

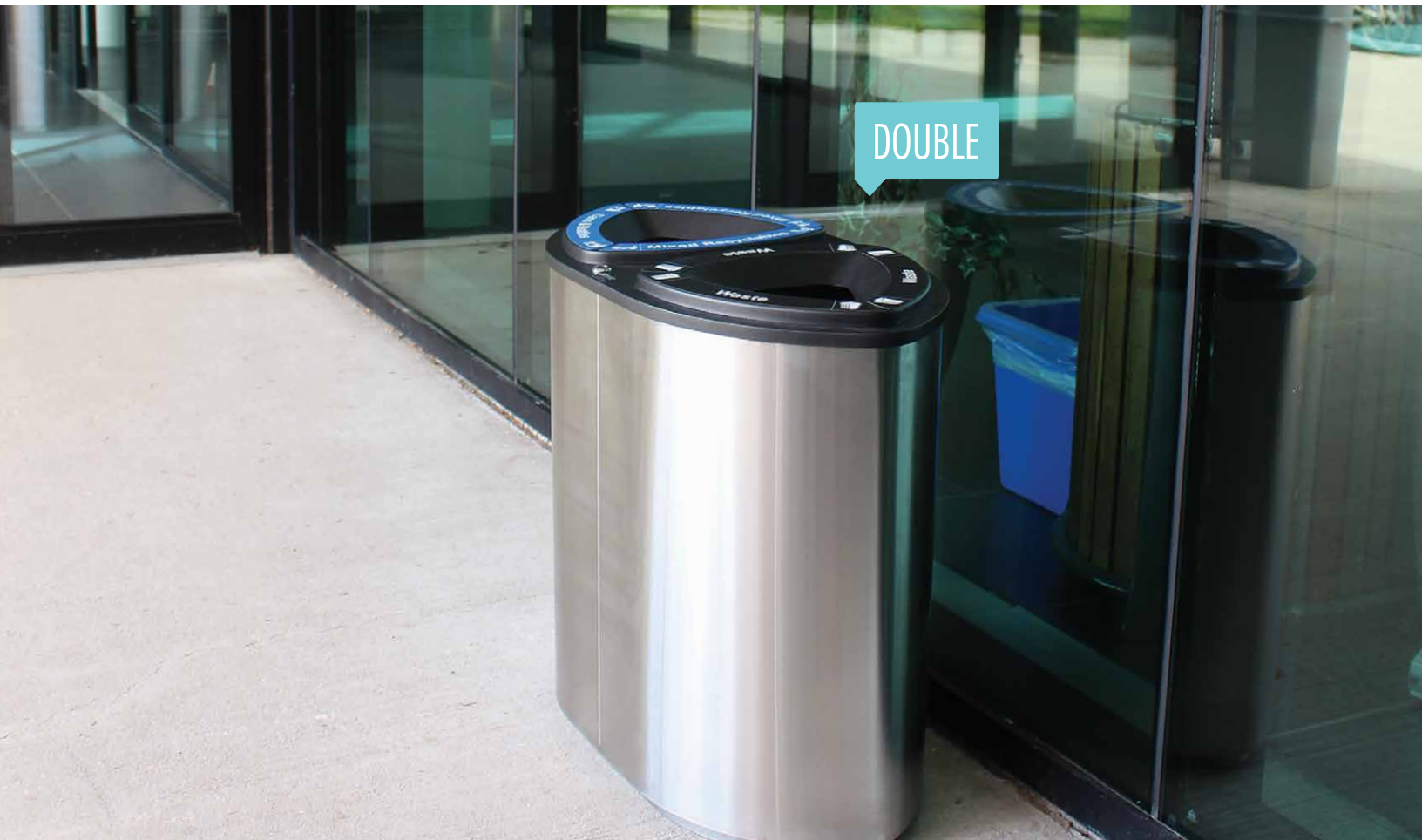




SINGLE

LOCKABLE & KEYED ALIKE

*\*Not intended for outdoor use*



DOUBLE



TRIPLE



**SINGLE**

CAPACITY: 36 Gallon  
DIMENSIONS: 21"D x 21"W x 34½"H

**DOUBLE**

CAPACITY: 52 Gallon  
DIMENSIONS: 17¼"D x 33½"W x 31"H

**TRIPLE**

CAPACITY: 78 Gallon  
DIMENSIONS: 17¾"D x 45"W x 31"H

STOCK FINISH:



**Material:** Stainless steel, powder coated black lid

**Accessories:** Optional sorting labels, cans & bottles and paper openings

FEATURES:

- High-end 20-gauge stainless steel body
- Equipped with pivoted bag retention system and hinged lid
- Self-extinguishing container
- Adjustable feet for uneven surfaces





Band Your Collection Program Together

INFINITE SELECT ALSO AVAILABLE!



Patent Pending

FEATURES:

- Infinite Elite comes standard with coloured ID band
- Choice of Mixed or Large opening
- Variety of colour combinations for attractive stream designation
- Bags stay hidden under lid

SPECIFICATIONS:

INFINITE ELITE  
**Capacity:** 37.5 Gallon  
**Dimensions:** 19¾"D x 24½"W x 35¾"H  
 INFINITE SELECT  
**Capacity:** 35 Gallon  
**Dimensions:** 19¾"D x 24½"W x 31¾"H  
**Material:** HDPE

ID BAND STOCK COLOURS:

 BLUE	 GREEN	 YELLOW
 RED	 BLACK	
 ORANGE	 DARK GREY	

STOCK BODY & LID COLOUR:

 BLACK





# INDOOR

From warehouse to boardroom, cafeteria to classroom (and even the corner office!), we have a dynamic selection of bins designed to manage your waste and recycling needs with utility and style. Our innovative, centralized collection systems can help your program reach the next step of zero waste. Our sleek modern options shake up the notion of what recycling can look like. Customization is king with all of our containers and our team will help you make our bins your own. So come indoors and get inspired!

- WASTE WATCHER | 15 - 17
- PAVILION | 18
- SMART SORT | 19
- DUETT | 20
- BILLI BOX | 21
- MULTI RECYCLER | 22
- CURVE | 23
- UPRIGHT SERIES | 24
- DESKSIDE RECYCLER | 25
- RECYCLING & WASTE BASKETS | 26
- HANGING WASTE BASKET | 27
- DIVERSITY | 28

 TOLL FREE **1.800.565.9931**  VISIT **[buschsystems.com](http://buschsystems.com)**

**BEST SELLER!**

**SINGLE**



**DOUBLE**



**WASTE WATCHER DOLLY**

MAKE TRANSPORTING YOUR WASTE WATCHER SERIES A BREEZE WITH THE WHEEL DOLLY ACCESSORY.



# WASTE WATCHER™

The World's Most Customizable Recycling Station

TRIPLE



Official US Patent #D670766  
Official EURO Patent #001949801-0001  
Official CAN Patent #155453  
Official US Patent #29/483452  
Official EURO Patent #002515759-0001

## SPECIFICATIONS:

16 GALLON: 20"D x 11"W x 24"H  
20 GALLON: 20"D x 11"W x 27"H  
23 GALLON: 20"D x 11"W x 30"H

**Material:** HDPE

**Openings:** See Page 3

## STOCK COLOURS:



## Optional Accessories:

Lids, labels, sign frames, connectors  
& Wheel Dollies

## FEATURES:

- Impactful signage & labeling
- Compatible with the Waste Watcher XL
- Optional solid & vented lift lids available
- 3 sizes available



# WASTE WATCHER XL™

Increased Recyclables?  
Increase Capacity!



\*Solid or vented lid  
option available

Official US Patent #D670766  
Official EURO Patent #001949801-0001  
Official CAN Patent #155453  
Official US Patent #29/483452  
Official EURO Patent #002515759-0001

## FEATURES:

- Impactful signage & labeling
- Compatible with the Waste Watcher Series
- Optional solid & vented lift lids
- High Capacity
- Fully customizable

## SPECIFICATIONS:

24 Gallon: 20 $\frac{1}{16}$ "D x 15 $\frac{3}{8}$ "W x 24"H  
28 Gallon: 20 $\frac{1}{16}$ "D x 15 $\frac{3}{8}$ "W x 27"H  
32 Gallon: 20 $\frac{1}{16}$ "D x 15 $\frac{3}{8}$ "W x 30"H

**Material:** HDPE

**Openings:** See Page 3

## STOCK COLOURS:



## Optional Accessories:

Lids, labels, sign frames, connectors  
& wheel dollies





PAVILION™

Changing The  
Landscape Of  
Collection



### SPECIFICATIONS:

**Capacity:** 66 Gallon

**Dimensions:** 18 $\frac{3}{8}$ "D x 44 $\frac{1}{4}$ "W x 37 $\frac{3}{8}$ "H

**Material:** LDPE

**Accessories:** Custom signage, custom labels, interchangeable openings

### STOCK COLOURS:



SANDSTONE



GREYSTONE

### AVAILABLE COLOURS:

*Minimum order required*



BLUESTONE



GREENSTONE



MILLSTONE

### FEATURES:

- Customizable 3 stream collection
- Strong, scratch resistant openings
- Interchangeable openings for evolving collection
- Three, front access, easy-to-lift liners



# Smart Sort™

One-Of-A-Kind  
Intelligence



## FEATURES:

- Easy handling capacity
- Convenient size and shape for tight spaces
- Lots of customizability with colour, label and opening options
- Create a recycling station with optional connector kit

## SPECIFICATIONS:

**Capacity:** 22 Gallon

**Dimensions:** (with lid) 15½"D x 14"W x 33½"H

**Dimensions:** (without lid) 15½"D x 14"W x 26"H

**Material:** HDPE

**Openings:** Rectangle, mixed, paper, circle

## STOCK COLOUR:



BLUE



GREY

**Accessories:** Connector kits (some assembly required), self closing flaps





### SPECIFICATIONS:

**Capacity:** 32 Gallon

**Dimensions:** 15<sup>3</sup>/<sub>4</sub>"D x 21"W x 30<sup>15</sup>/<sub>16</sub>"H

**Material:** HDPE

**Accessories:** Signage, decals & interchangeable openings

### STOCK COLOUR:



**Now featuring:** Brand-new bag clipping system for easy setup & removal

### FEATURES:

- Set-up and removal a breeze
- Interchangeable openings for evolving collection
- Signage options that increase use
- Smooth side grips allow for easy handling





Patent Pending

**FEATURES:**

- Small footprint makes them perfect for small spaces
- Wide variety of body, lid and frame options
- A huge assortment of opening options







**SPECIFICATIONS:**

**7 GALLON**  
DIMENSIONS: 15½"D x 11¼"W x 15¾"H

**10 GALLON**  
DIMENSIONS: 15½"D x 11¼"W x 20¾"H

**Material:** HDPE  
**Openings:** Circle, slot, mixed, rectangle, flap hinged lid

**STOCK COLOURS:**

- |   |  |
|---|--|
|  BLUE  |  RED    |
|  GREEN |  YELLOW |
|  BLACK |  GREY   |

**MIX & MATCH!**  
*Bodies, Openings, Frames, Swing Lid*



**BEST SELLER!**

# MULTI RECYCLER™

Stack Up  
Against Waste

Official US Patent #8950581

**PERFECT FOR  
SMALL SPACES!**



## SPECIFICATIONS:

**Capacity:** 6 Gallon

**Dimensions:** 14"D x 10 $\frac{1}{2}$ "W x 13 $\frac{1}{4}$ "H

**Material:** HDPE

## STOCK COLOURS:



BLUE



GREEN



GREY



RED



YELLOW

## Generic stamp on front:

Mobius loop

## FEATURES:

- Stackability allows for recycling in small spaces
- Easy to carry with sturdy handles
- Slanted opening for easy access
- Comes stamped with Mobius Loop
- Great for dorms & kitchens



# CURVE™

Kick Waste To  
The Curve

\*Non-stocked Colour Shown

## FEATURES:

- Perfect for large capacity collection
- 4 different options for lid openings
- Lid and body Colours can be mixed
- Custom labels available
- Available without the lid

## SPECIFICATIONS:

**Capacity:** 45 Gallon  
**Dimensions:** 21"D x 22½"W x 30"H  
(lid): 21¾"D x 23¾"W x 6"H

**Material:** LDPE

**Openings:** Round, Slot, Rectangle, Mixed

*Optional drill holes available in bottom for event usage.*

## STOCK COLOUR:

 GREYSTONE

AVAILABLE COLOURS: *Minimum order required.*

 SANDSTONE

 BLUE

 BLACK



# UPRIGHT SERIES™

Stand Up for  
Sustainability



\*Clearview lid only available on 26 Gallon

## SPECIFICATIONS:

### 7 GALLON

DIMENSIONS: 12¼"D x 12¼"W x 14¼"H

### 14 GALLON

DIMENSIONS: 15½"D x 15½"W x 18¼"H

### 26 GALLON

DIMENSIONS: 18¾"D x 18¾"W x 22½"H

## STOCK COLOURS:



BLUE



GREY



GREEN

\* Only available  
for 26 Gallon

**Material:** HDPE

## FEATURES:

- Can be used for different waste streams
- Compact size
- Add-on lids and handles for security and maneuverability
- Clear sort makes recyclables visible



# Deskside™ RECYCLER

The Perfect  
Deskside  
Companion



*Patent Pending*

## FEATURES:

- Fits under most desks and workstations
- Can combine with the Hanging Waste Basket
- Multiple colours & stamping available

## SPECIFICATIONS:

**Capacity:** 3 Gallon  
**Dimensions:** 14½"D x 11"W x 7"H  
**Material:** HDPE

## STOCK COLOURS:



*Pair it with our hanging waste basket!*



## Recycling & Waste Baskets™

Every Desk Needs  
Its Own Green  
Department

3 SIZES  
AVAILABLE!



### SPECIFICATIONS:

**14 QUART** CAPACITY: 4 Gallon

**Dimensions:** 11½"D x 7¾"W x 12"H

**28 QUART** CAPACITY: 7 Gallon

**Dimensions:** 14¾"D x 10¾"W x 15"H

**41 QUART** CAPACITY: 10 Gallon

**Dimensions:** 15"D x 10¾"W x 19¾"H

**Material:** HDPE

### STOCK COLOURS:



*Pair it with our hanging  
waste basket!*

### FEATURES:

- Integrates into any workstation effortlessly
- Easily holds the Hanging Waste Basket
- Encourages recycling
- Made with 35% recycled content



# HANGING Waste Basket™

Waste Less By  
Your Desk

OPTIONAL LID STOCKED  
WITH "WASTE ONLY!"

Patent Pending

## FEATURES:

- Fits most desktide containers
- Lightweight for easy portability
- Rounded edges make it easy to clean
- Optional lid improves waste diversion

## SPECIFICATIONS:

**Capacity:** 0.75 Gallon

**Body dimensions:** 5½"D x 7½"W x 6½"H

**Lid dimensions:** 6"D x 7½"W x 5/16"H

**Material:** HDPE

## STOCK COLOURS:



BLUE

GREEN



GREY

BLACK



**DIVERSITY**<sup>™</sup>  
series

Diversify Your  
Program!



#### SPECIFICATIONS:

**Capacity:** 22 Gallon

**Dimensions:** 17¼"D x 15¾"W x 39½"H

**Swing Lid:** 15¾"W x 9⅝"H

**Material:** Wood Composite

#### STOCK COLOURS:



*Custom units, colours & openings  
available!*

#### FEATURES:

- Perfect for cafeteria collection
- Variety of stamped openings to choose from
- Swing lid makes emptying standard size trays easy
- Secure and keyed alike for easy collection





# OUTDOOR

Bins for green spaces, open places, parks, promenades and all points in between. Keep the outdoors more beautiful with bins from Busch Systems. Our bins are tried, tested and true for durability and longevity. They're designed to handle varying weather conditions and collection volume in finishes that jive with natural surroundings. They can be customized to shout your school or company colours to the world! So come and play outside with us...

CONCOURSE | 30

UPTOWN | 31 - 32

SUPER SORTER | 33

WAVE | 34

SENTRY | 35

CURBSIDE SERIES | 36

TRC & BARREL TOPPER | 37

RECYCLING & WASTE CARTS | 38

 TOLL FREE **1.800.565.9931**  VISIT **[buschsystems.com](https://www.buschsystems.com)**



**Concourse™**

Where Recycling  
Meets Convenience

OVERHEAD VIEW

Patent Pending

## SPECIFICATIONS:

**Capacity:** 45 Gallon

**Dimensions:** 22 $\frac{3}{4}$ "D x 24 $\frac{1}{16}$ "W x 34 $\frac{3}{4}$ "H

**Material:** HDPE

**Openings:** Round, Slot, Rectangle, Mixed

## STOCK COLOUR:

 GREYSTONE

## Optional Accessories:

Outdoor lid tethering kit, weighted support kit.

## FEATURES:

- Interchangeable lid and opening options
- Custom hot-stamped name plates
- Intuitive Easy Bag system
- Durable for indoor and outdoor use





SINGLE



DOUBLE



Uptown™

Upscale &  
Unrestricted

TRIPLE



Official CAN Patent #155455  
Official US Patent #29/483450

## SPECIFICATIONS:

### **SINGLE**

CAPACITY: 32 Gallon

DIMENSIONS: 23¾"D x 21¼"W x 45½"H

### **DOUBLE**

CAPACITY: 64 Gallon

DIMENSIONS: 23¾"D x 39½"W x 45½"H

## STOCK COLOURS:



### **TRIPLE**

CAPACITY: 96 Gallon

DIMENSIONS: 23¾"D x 58¾"W x 45½"H

**Material:** HDPE & LDPE

## FEATURES:

- Perfect for large, centralized collection
- Interior deflectors ensures a proper sort
- Separate liners make changeover a breeze
- Weighted base adds stability



# Super Sorters™

Everlasting Design,  
Sustainable Price

**AVAILABLE IN:**  
SINGLE, DOUBLE,  
TRIPLE & QUAD

HERE IT IS AS  
A DOUBLE!



\*More options available

Official CAN Patent #613118  
Official US Patent #3064230

## FEATURES:

- Multiple sizes to accommodate your stream collection needs
- Durable and long-lasting – won't dent or rust
- Easy to empty
- Hot-stamped labels that won't peel or fade

## SPECIFICATIONS:

- ONE IN ONE** 30 Gallon  
DIMENSIONS: 15¾"D x 20½"W x 44½"H
- TWO IN ONE** 64 Gallon  
DIMENSIONS: 23¾"D x 37¾"W x 45"H
- THREE IN ONE HD** 69 Gallon  
DIMENSIONS: 23¾"D x 37¾"W x 45"H

## STOCK COLOURS:

-  **SANDSTONE** |  **GREYSTONE**
- THREE IN ONE** 96 Gallon  
DIMENSIONS: 25"D x 44½"W x 47½"H
- FOUR IN ONE HD** 92 Gallon  
DIMENSIONS: 25"D x 44½"W x 47½"H



SPECIFICATIONS:

**Capacity:** 40-46 Gallon

**Dimensions:** 22½"D x 22¼"W x 42"H

**Material:** LDPE

STOCK COLOUR:



*Single stream & multi stream models available.*

FEATURES:

- Perfect for outdoor & indoor collection
- Lid designed to fit food trays securely for indoor use
- Multiple stream options
- Rotationally molded for increased durability





WASTE MODEL AVAILABLE!



Patent Pending

FEATURES:

- Dent & rust resistant, low-to-no maintenance
- Light weight and cost effective
- Intuitive bag retention system available with recycling model

SPECIFICATIONS:

**Capacity:** 45 Gallon (using bags)  
**Dimensions:** 23½”D x 23½”W x 41½”H  
**Material:** LDPE

STOCK COLOURS:



**Standard Accessories:** Blue model comes stamped with mobius loop on front & back, in-mold graphics  
**Optional Accessories:** labels, baffles



# Curbside SERIES™

The Original  
Recycling Bins



## SPECIFICATIONS:

- 14 Gallon Nesting Ratio:** 15:1
- 16 Gallon Nesting Ratio:** 15:1
- 18 Gallon Nesting Ratio:** 14:1
- 21 Gallon Nesting Ratio:** 9:1 *Non-Stock*
- 24 Gallon Nesting Ratio:** 11:1

## STOCK COLOURS:



**Warranty:** Full 5 years

*Lid options available!*

## FEATURES:

- Custom stamping options
- Bottom feet that reduce impact
- Stacks effortlessly across other sizes
- Very high nesting ratio



FEATURES:

- Perfect for large collection
- Can be used inside & outside
- Multiple lid options
- Great for multi material collection
- Optional wheel dolly makes it easy to move



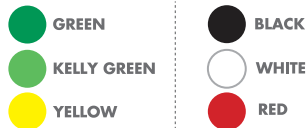
SPECIFICATIONS:

- TRC 20 Capacity:** 20 Gallon
- TRC 25 Capacity:** 25 Gallon
- TRC 32 Capacity:** 32 Gallon

STOCK COLOUR:



AVAILABLE COLOURS:



FEATURES:

- Keeps contents of barrel dry
- Fits securely on all existing 45 gallon barrels
- Multiple colours & stamping available



SPECIFICATIONS:

- Dimensions:** 25<sup>3</sup>/<sub>16</sub>" Diameter x 17"H
- Material:** LDPE

STOCK COLOURS:





RECYCLING and WASTE™  
CARTS

Recycling On  
A Roll

SPECIFICATIONS:

**Capacity:** 65 Gallon

**Dimensions:** 29½"D x 25½"W x 42⅝"H

**Capacity:** 95 Gallon

**Dimensions:** 33¼"D x 27½"W x 45⅝"H

STOCK COLOUR:



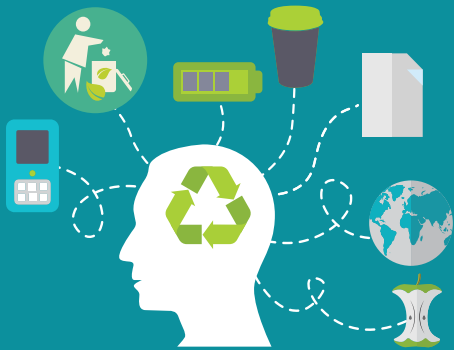
**Optional Accessories:**

Hasp, Super Sorter Openings

FEATURES:

- Body designed for automated lifting equipment
- Easy & quick to empty
- Contoured lid reduces warp and water build-up
- Durable & long lasting
- Can be locked for extra security





COFFEE CUP RECYCLER + BATTERY BIN | 40  
KITCHEN COMPOSTER +  
CELL PHONE RECYCLER | 41  
DIAPER + SOIL SAVER | 42  
SHREDINATOR + PERSONAL DOCUMENT  
CONTAINER | 43  
4 WHEEL CART + DURAFLEX | 44

# SPECIALTY

Looking for an unusual bin that doesn't quite fit the mold of most other recycling and waste containers? Busch Systems Specialty recycling and waste bins are designed for niche circumstances such as battery recycling, organics or e-waste. Every bin serves its purpose but if you don't find what you need here, feel free to contact us and we'll do our best to design a container for your specific needs!



TOLL FREE **1.800.565.9931**



VISIT **buschsystems.com**





**CUSTOMIZE  
YOUR GRAPHICS**

*Coffee Cup™*  
Collector  
**Good To The  
Last Cup**

Official CAN Patent #136311  
Official US Patent #D659336

- FEATURES:**
- Openings force users to separate lids from cups
  - Internal liners that keep streams separated
  - Liquid contamination is reduced by fitted grate



**SPECIFICATIONS:**

**Capacity:** 22 Gallon  
(cups liner)

**Dimensions:**  
16½"D x 30"W x 36"H

**Material:** HDPE

**STOCK COLOUR:**

● **BROWN**



**BATTERY  
BIN™**  
Make Battery  
Collection Less  
Negative

Patent Pending

- FEATURES:**
- Collects large quantity of batteries
  - An easy-to-open and close lid  
Strong, gripped handle



**SPECIFICATIONS:**

**Capacity:** 2.25 Gallon

**Dimensions:**  
8½"D x 9"W x 11"H

**Material:** HDPE

**STOCK COLOUR:**

● **BROWN**

FEATURES:

- Compact organics collection
- 3 lid options
- Dishwasher safe
- Prevent odors with carbon filtering system (optional)



SPECIFICATIONS:

**KC2000**

**Capacity:** 2.25 Gallon

**Dimensions:**

8½"D x 9"W x 11"H

**KC1000**

**Capacity:** 1.58 Gallon

**Dimensions:**

8.5"L x 9"W x 8"H

STOCK COLOUR:



**Kitchen Composters™**  
Composting Within Reach



Patent Pending

FEATURES:

- Perfect for e-waste collection
- Signage options to improve collection rate
- Customize to collect ink-jet cartridges & hard drives
- Lockable, keyed alike



SPECIFICATIONS:

**Capacity:** 10 Gallon

**Dimensions:**

15¾"D x 20"W x 45¼"H

**Material:** Melamine

STOCK COLOUR:



**CELLPHONE RECYCLER™**  
Put E-Waste On Hold





*odor-free*  
**DIAPER PAIL™**  
Do You Smell That?  
We Don't!

AVAILABLE IN  
7 GALLON!



Patent Pending

**FEATURES:**

- Charcoal filter stops odors, moisture & mold
- Side handles keeps lid closed and secure
- Durable and long lasting



**SPECIFICATIONS:**  
**Capacity:** 7 Gallon  
**Dimensions:** 12¼"D x 12¼"W x 14¼"H  
**Capacity:** 14 Gallon  
**Dimensions:** 14½"D x 14½"W x 18"H  
**Material:** HDPE  
**STOCK COLOUR:**  
○ WHITE



**Soil Saver™**  
Save Your Scraps,  
Grow Your Garden

**FEATURES:**

- Lockable lid keeps animals out
- Structural foam design keeps compost insulated
- Easy set up with no tools required!



**SPECIFICATIONS:**  
**Capacity:** 12 Cu. Ft.  
**Dimensions:** 28"D x 28"W x 32"H  
**Material:** 100% Recycled Plastic  
**STOCK COLOUR:**  
● BLACK

FEATURES:

- Keeps documents secure
- Tamper proof lid
- Compatible with Waste Watcher Stations



SPECIFICATIONS:

**16 Gallon**

5.6 lbs | 20"D x 11"W x 24"H

**20 Gallon**

5.8 lbs | 20"D x 11"W x 27"H

**23 Gallon**

6.5 lbs | 20"D x 11"W x 30"H

**Material:** HDPE

STOCK COLOUR:



FEATURES:

- Protects sensitive documents
- Sturdy lid prevents tampering
- Fits under any desk



SPECIFICATIONS:

**Capacity:** 9 Gallon

**Dimensions:**

16¾"D x 12"W x 13¼"

**Material:** HDPE

STOCK COLOUR:





**FOUR WHEEL  
SECURE CART™**  
Big Security  
On Wheels

**FEATURES:**

- Perfect for large quantity collection
- Lid with molded deflector paper slot
- External Hasp Lock System



**SPECIFICATIONS:**

**Capacity:** 175 Gallon

**Dimensions:**

49"D x 30½"W x 47¾"H

**Material:** HDPE

**STOCK COLOUR:**



**Duraflex**  
Confidential  
Collection

**FEATURES:**

- Door opens 190° to take hassle out of emptying
- Keyed alike
- Self-closing lock
- Durable modular base



**SPECIFICATIONS:**

**Capacity:** 70-80 lbs

**Dimensions:**

16"D x 21½"W x 36"H

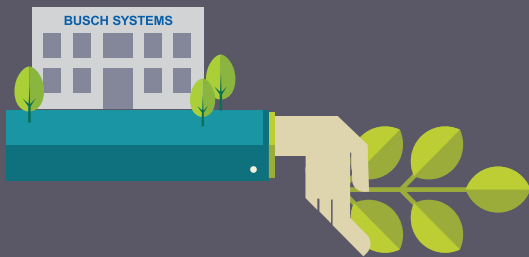
**Material:** Melamine

**Accessories:** ID badges, nylon bags, rigid insert

**STOCK COLOUR:**



MINI MULTI PURPOSE  
MINI ROLL-OUT CART  
MINI CURBSIDE BIN  
RECYCLING BOX KEYCHAIN  
MINI 28 QUART BIN



# PROMOTIONAL

People love our mini products! If you love promoting your company or green initiatives, what better way to do that than with our popular promotional items? By having them custom stamped with your company name, logo and contact information it's a great way to keep your logo front and center. Take these to trade shows or fill with candy to and deliver to clients at holiday time, however you use them they're sure to be a hit. Have an idea for a new promotional item? We'd love to hear your ideas!



TOLL FREE **1.800.565.9931**



VISIT **buschsystems.com**



MINI **ROLL-OUT** CART



MINI ROLL-OUT **KEYCHAIN**



MINI **CURBSIDE** BIN



MINI **28 QUART** BIN

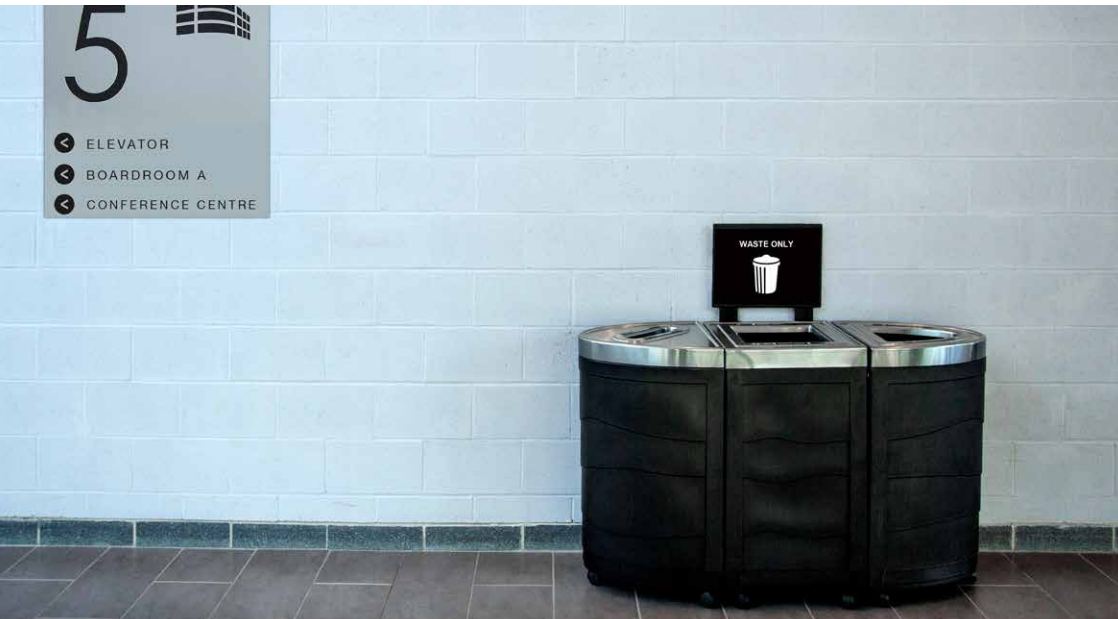


**Custom Stamp**  
your logo on any of our  
promotional items!

**Busch Systems** can custom stamp your name, logo and contact info to any of our promotional items. Fill the bins up with treats, business cards, pens and any other goodies and send them to your customers or hand them out at tradeshow.



See our website  
for product details



- 5
- ← ELEVATOR
  - ← BOARDROOM A
  - ← CONFERENCE CENTRE