



Let's Recycle Better, Together.

The Future of Office Waste & Recycling Collections

February 17, 2021

Panelists



Alec Cooley
Senior Advisor
Busch Systems



Amy Marpman
Director, Sustainability
SBM



Kikei Wong
Zero Waste Coordinator
University of California,
Los Angeles



Abbey Massaro
Environmental Specialist
Center for
EcoTechnology

Agenda for Panel Discussion

Staples

1. Deskside collections
2. Centralized stations
3. Collection systems | Working w/ Housekeeping
4. Education | Employee engagement

Emerging Trends

5. Food organics
6. SMART bins
7. Procurement | Upstream

Use Dashboard to Participate

Chat function

- Share thoughts, experience, Q's with other attendees
- Links to resources

Question function

Direct questions for panelists

Rethinking How Waste Is Handled

Moving beyond a “taking out the trash” mentality, toward a systems optimization approach.





Amy Marpman

LEED AP O+M, TRUE Advisor, CSRMP

- 14 years as a waste professional
- Experience with Class-A commercial office buildings and corporate campuses
- Standardized and improved performance of recycling programs
- Monitoring and tracking waste metrics

11,000

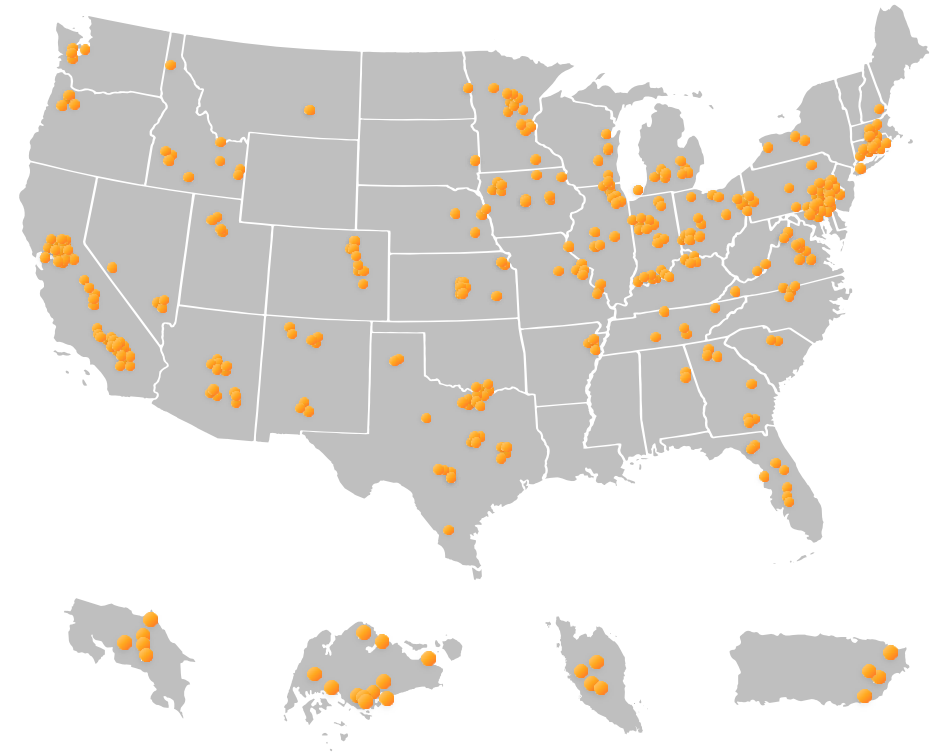
Associates are empowered, incentivized, and engaged

500+

Global Locations

37 Years

Of industry experience across complex client portfolios



FREE ASSISTANCE FOR BUSINESSES & INSTITUTIONS

Wastedfood.cetonline.org

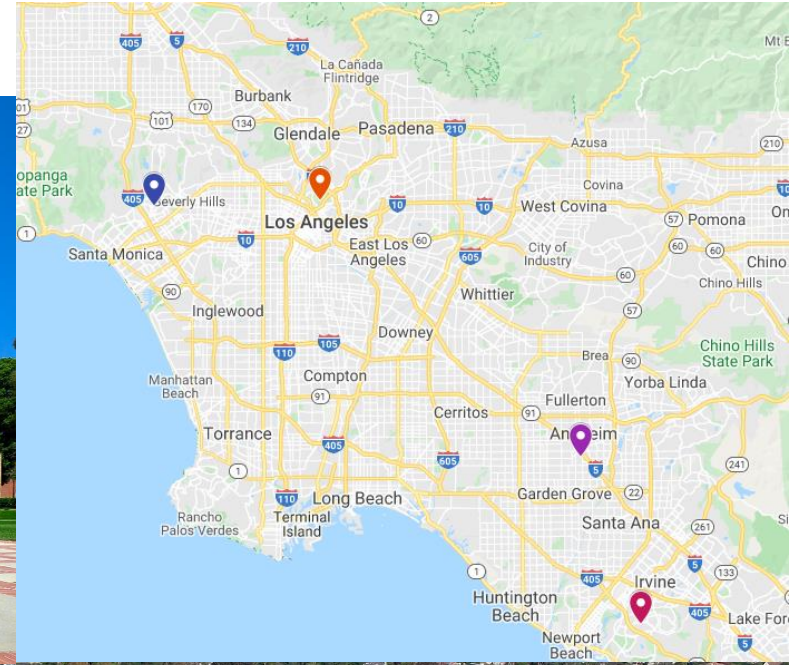


Recyclingworksma.com



UCLA

- 419 acres, 25M sq/ft main campus
- Two (or six) hospitals
- 5000 lab assigned spaces
- 14k+ beds on campus
- 45k+ students
- Daily population of 80,000+ people pre-COVID



UC Zero Waste Initiatives

Refuse

- Decline unnecessary items

Reduce

- Minimize waste from the source

Reuse

- Use available materials over and over

Donate

- Give usable materials to others

Recycle

- Turn old stuff into new stuff

University of California – Policy on Sustainable Practices



Sustainable Practices

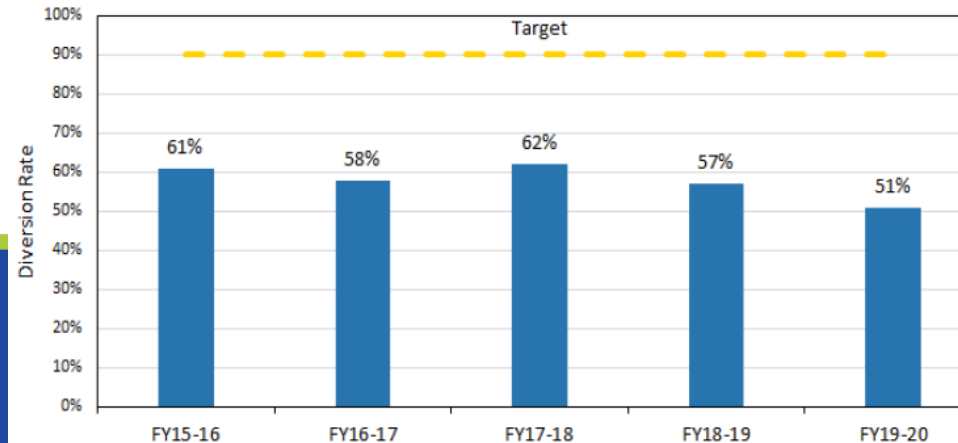
Responsible Officer:	EVP – Chief Operating Officer
Responsible Office:	ES – Energy & Sustainability
Issuance Date:	7/24/2020
Effective Date:	7/24/2020
Last Review Date:	1/31/2020
Scope:	All Campuses, Health Locations, and the Lawrence Berkeley National Laboratory

- The University will achieve zero waste through prioritizing waste reduction in the following order: reduce, reuse, and then recycle and compost (or other forms of organic recycling) as described in section V.F.6. Minimum compliance for zero waste, at all locations other than health locations, is as follows:
 - Reduce per capita total municipal solid waste generation by:
 - 25% per capita from FY2015/16 levels by 2025
 - 50% per capita from FY2015/16 levels by 2030.
 - Divert 90% of municipal solid waste from the landfill.

% Reduction in Waste Generation Per Capita from FY15-16 Baseline



Diversion Rate from Landfill



Topic #1: Deskside Collections



Topic #1: Deskside Collections



Live Poll #1

Which arrangement best applies to your Deskside collections?

- Waste baskets + Custodial trash-only service provided
- Waste baskets + Custodial trash & recycling service provided
- Waste baskets provided; No custodial, self-service to centralized bins
- No baskets or service; No custodial, self-service to centralized bins
- Other

Topic #2: Centralized Bin Stations



Bin Signage



Bin Signage



Previous State of Affairs

Random mismatched bins and liners found in building hallways



Amount (and variety!) of bins removed from one building



Haines Hall



School of Nursing

Repurposed Bins

Use existing infrastructure to save on costs, materials (especially if it matches aesthetic requirements)



Signage & Visual Cues

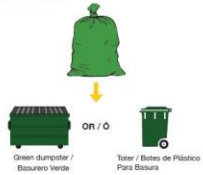
ZERO WASTE UCLA

WHAT GOES WHERE / AONDE VA TODO

COMPOST / SOBRANTES



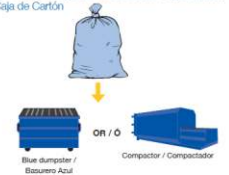
Food scraps / Solo Desechos de Comida
Compostables / Materia Orgánica Desechable
Paper with food / Productos de Papel
con Alimentos



RECYCLE / RECICLAR



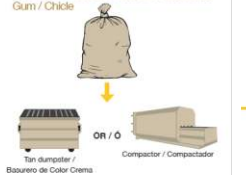
Empty plastic, metal and glass containers /
Contenedores Vacíos de Plástico, Metal y Vidrio
Aluminum foil and trays / Papel de aluminio
Clean mixed paper and cardboard / Papel Mixto y
Cajas de Cartón



TRASH / BASURA



Snack wrappers and chip bags /
Envoltura de Plástico y Bolsas de Chips
Soiled fabrics / Telas sucias
Styrofoam / Artículos Echoes de Poliestireno
Gum / Chicle



ZERO WASTE UCLA

Other Things to Remember / Otras Cosas Para Recordar

Do NOT pick up Universal Waste, E-waste, or Hazardous Waste! Tell Clients to submit an FSR /
No debe de recoger basura universal, basura electrónica, o peligrosa. Notifique a los clientes que pidan un FSR



Batteries /
Pilas



Ink Cartridges /
Cartuchos de Tinta



Light Bulbs & Tubes /
Focos y Tubos de Luz



Paints & Chemicals /
Pintura y Sustancia Química/o



Electronics /
Materia Electrónica



Office Furniture /
Muebles de Oficina

Report Issues / Reporte Cualquier Problema:
Tell a supervisor or leave a May We Help You note /
Díjale a un supervisor o deje una nota (de May We Help You)

Give Us Feedback / Danos Comentarios
We want to hear from you! / Queremos oírlo a usted!

PAPER TOWELS ONLY

Millions of tons of paper towels go to the landfill
every year in the United States...



At UCLA, we make sure our paper towels are
repurposed through composting.

UCLA, reduce.
Be a part of the solution.



Please throw other trash away in the designated
landfill containers located outside of the restroom.

Supporting the UC Sustainable Practices
Policy Target of Zero Waste by 2020

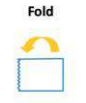
One towel is enough.



Shake hands 10–12
times to remove water.



Take one paper towel
from the dispenser.



Fold paper towel in
half and dry hands.

Millions of tons of paper towels go to the landfill every year in the United States...
... at UCLA, we make sure our paper towels are repurposed through composting.

UCLA, reduce. Be a part of the solution.



Supporting the UC Sustainable Practices
Policy Target of Zero Waste by 2020



May We Help You?

We noticed the following while cleaning this area:

- Contamination (Contaminación):
in the Trash / Recycling / Organics
- E-Waste / Household Waste (Basura Electrónica /
Desechos domésticos):
Batteries / Ink / Computer Parts / Light Bulbs / Other
- Cardboard not broken down (Cartón no
descompuesto)

Questions? Email ZeroWaste2020@ucla.edu or visit
www.sustain.ucla.edu for more info.



COMPOST

RECYCLE

EMPTY FOOD & LIQUIDS TO COMPOST

LANDFILL



ALL FOOD & LIQUIDS



SOILED PAPER PRODUCTS



HARD PLASTICS

MIXED PAPER



METALS

GLASS



MIXED MATERIAL PRODUCTS



OTHER

PLASTIC FILM

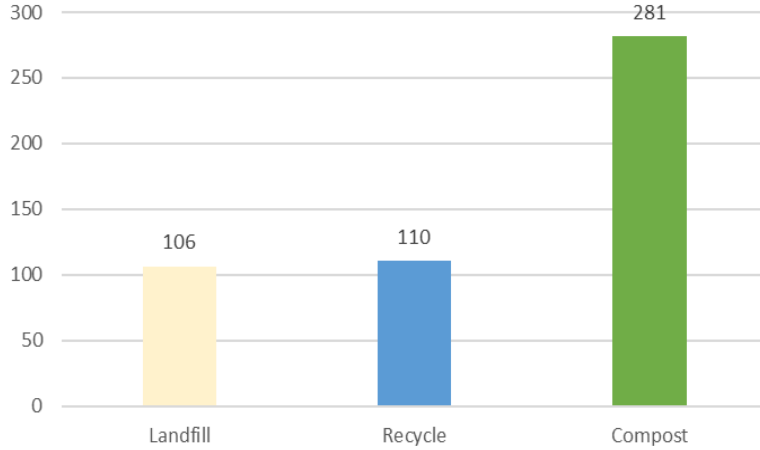


Key Message – Individuals are responsible for
their own waste sorting!

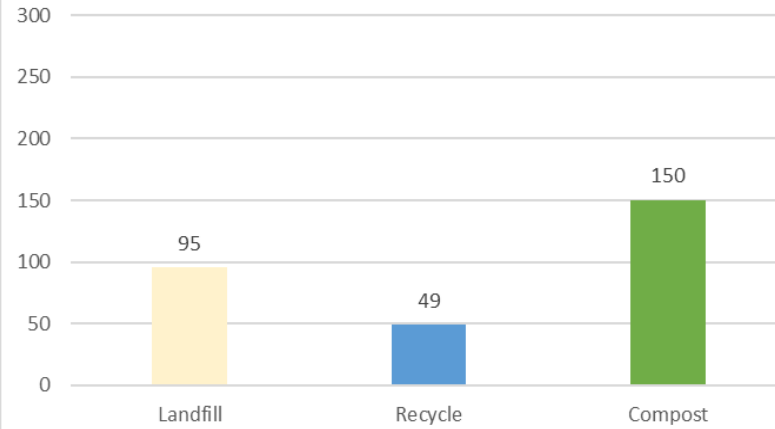
All of these graphics are available for sharing

Case Study at UCLA Libraries

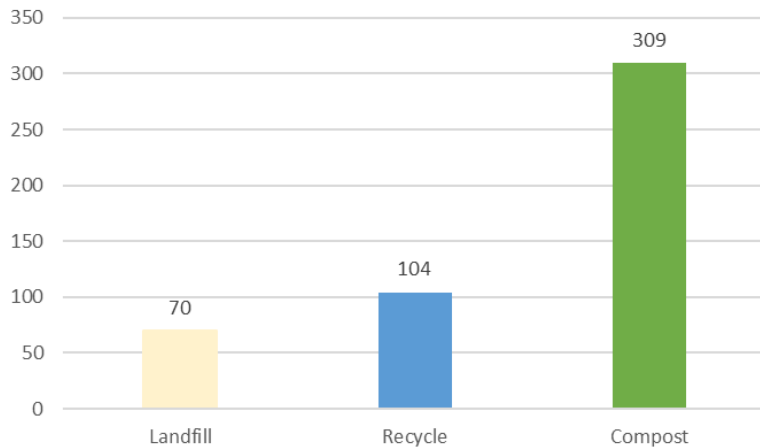
YRL Total Landfill Waste Composition (lbs) - February 2019



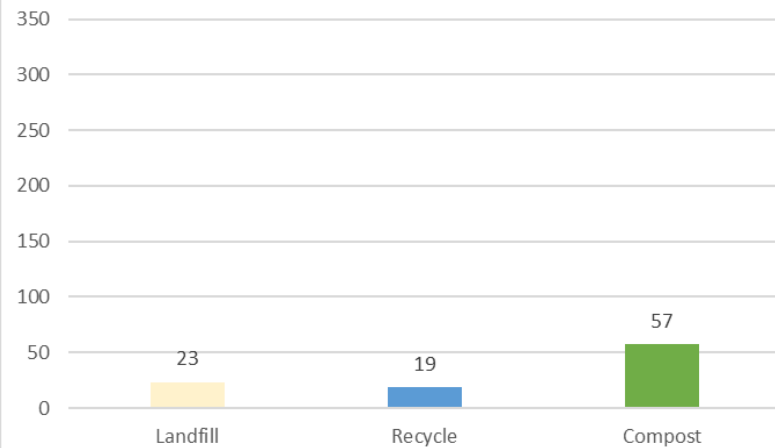
YRL Total Landfill Waste Composition (lbs) - May 2019



Powell Total Landfill Waste Composition (lbs) - February 2019



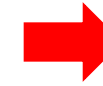
Powell Total Landfill Waste Composition (lbs) - May 2019



YRL



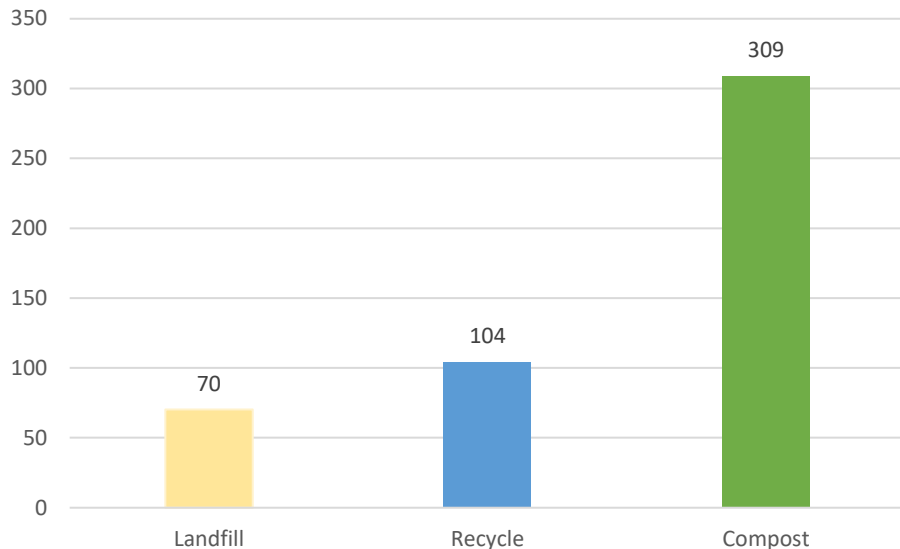
Average # of bins removed from each library floor



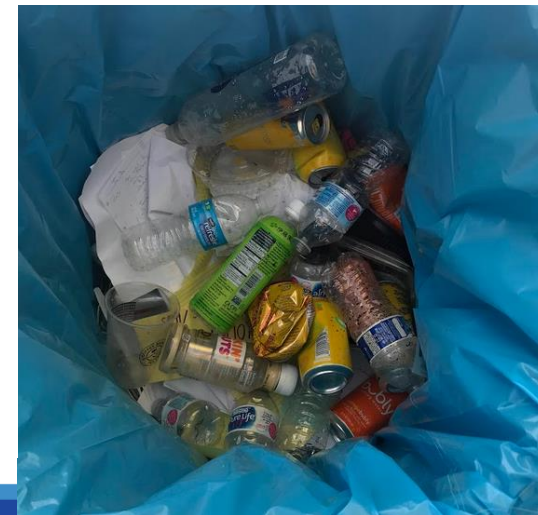
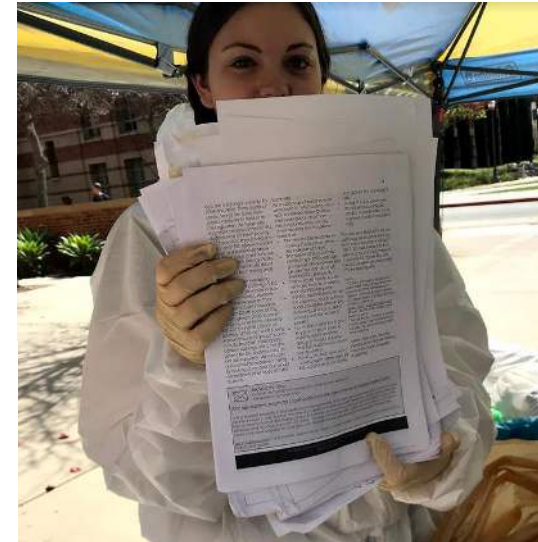
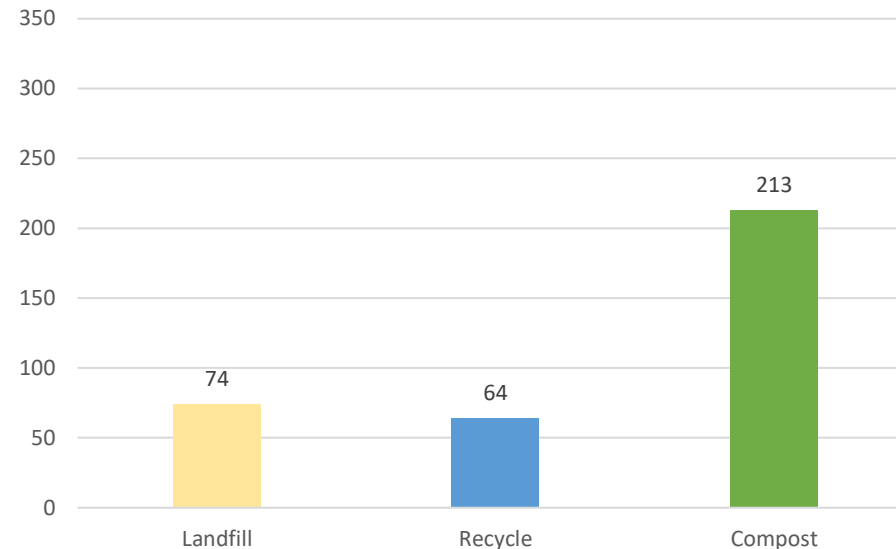
Powell Follow Up – One Year Later

- Diversion reverted back to 2019 pre-transition 😞
- Pilot isn't enough for permanent change
- Need institutionalized efforts and continuous engagement

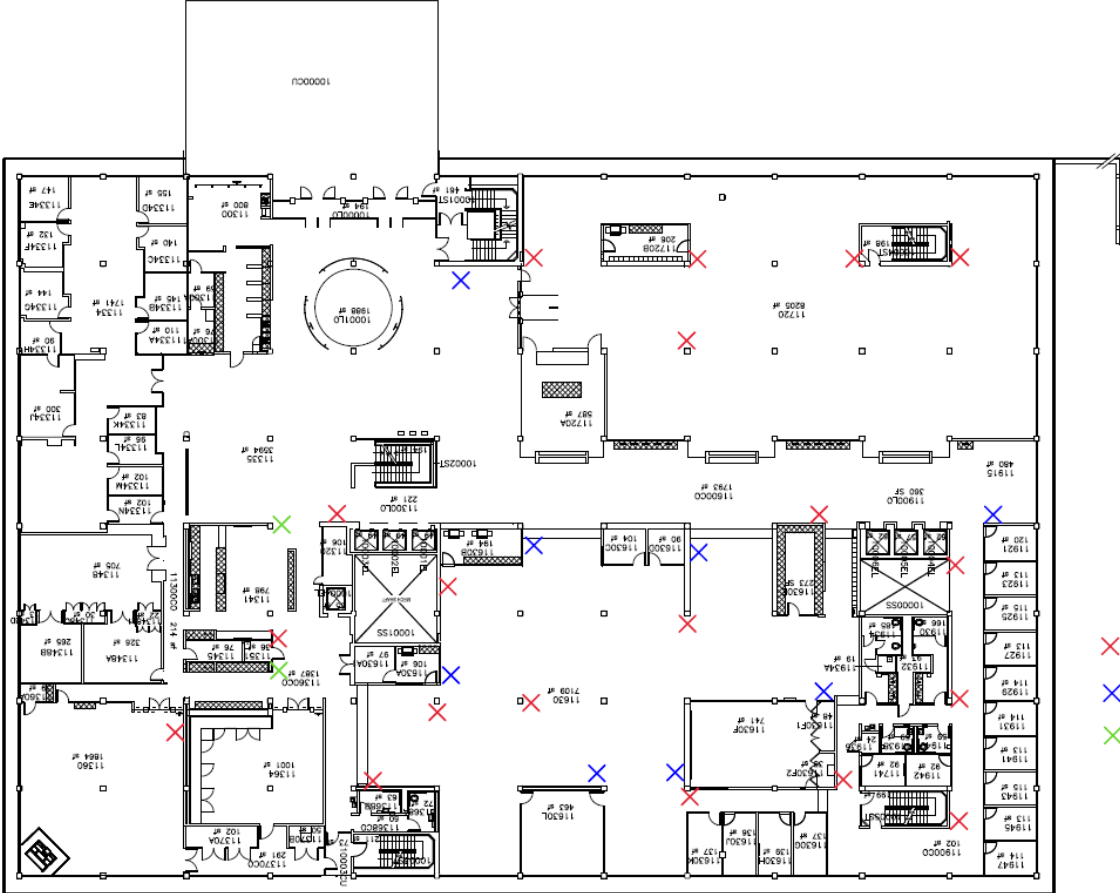
Powell Total Landfill Waste Composition (lbs)
- February 2019



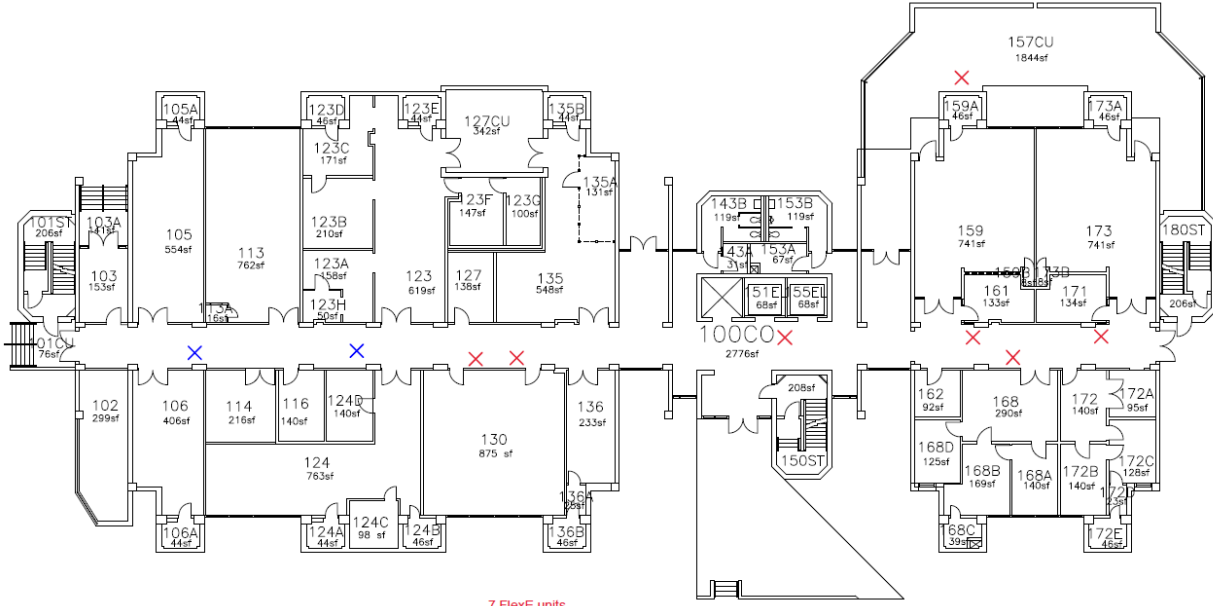
Powell Total Landfill Waste Composition (lbs)
- February 2020



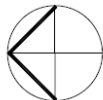
Floor plans



- ✗ 19 FlexEs
- ✕ 8 pairs of mesh L/R
- ✕ 2 mesh C



- 7 FlexE units
- 2 pairs of Brutes


BOYER HALL
 UNIVERSITY OF CALIFORNIA LOS ANGELES
FIRST FLOOR
REV'D BY: AL 02/12/2018

0 4 8 16 32

Placement



Live Poll #2

Which best describes your recycling / diversion program?

- Beginning stages – minimal recycling
- Established, but lots of room to improve
- Advanced, employ many best-practices
- Leader, pursuing aggressive zero waste steps

Topic # 3: Collection Systems / Housekeepers



Topic # 3: Collection Systems / Housekeepers



Topic #3: Collection Systems / Housekeepers



Topic #4: Education & Employee Engagement

PLEDGE NOW #BERECYCLED

I 
America Recycles Day
A KEEP AMERICA BEAUTIFUL INITIATIVE

LEARN
I will find out what materials can be recycled in Liberty County.

ACT
I will reduce the amount of waste I produce, I will recycle more, and I will buy products made with recycled content.

SHARE
I will encourage my family members, my friends, and my co-workers to learn more about recycling and to take the #BeRecycled pledge.



Topic #4: Education & Employee Engagement



Topic #5: Food Organics



Topic #6: SMART Bins



Topic #7: Procurement / Upstream



Thank You to Our Panelists

Alec Cooley

Senior Advisor

Busch Systems

alecc@buschsystems.com

Amy Marpman

Director, Sustainability

SBM

amarpman@sbmcorp.com

Abbey Massaro

Environmental Specialist

Center for EcoTechnology

abbey.massaro@cetonline.org

Kikei Wong

Zero Waste Coordinator

University of California, Los Angeles

kwong@facnet.ucla.edu

Busch Systems Resources

Consulting Services

- Designing collection systems
- Planning bin infrastructure
- Waste composition studies
- Employee engagement
- TRUE advising



Advancing Recycling Blog Series

