



Let's Recycle Better, Together.

INTEGRATING RECYCLING & WASTE REDUCTION INTO
HOTEL & RESORT OPERATIONS

THURSDAY SEPTEMBER 30 1:00 - 2:30 P.M. EST.



Today's Panelists



Alec Cooley

Senior Advisor
Busch Systems
Charleston, SC



Sheena Chin-Greene

Green Lodging Program Manager
Florida Dept. of Environmental
Protection
Jacksonville, FL



Dylan Hoffman

Director of Sustainability
Yellowstone National Park /
Xanterra Parks & Resorts
Teton County, WY

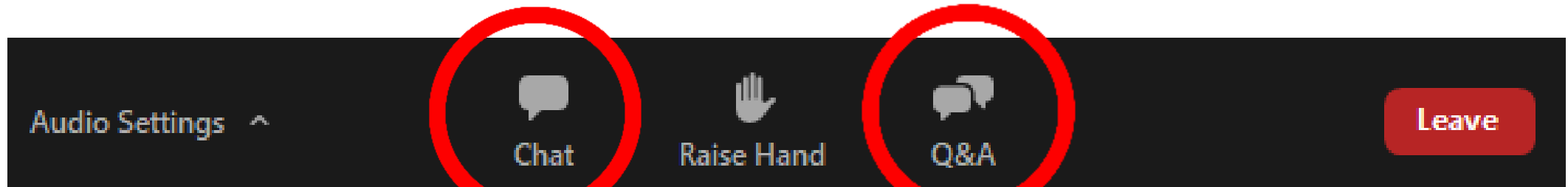


K. Denaye Hinds, LEED AP

Managing Director
JustaTAAD, LLC
Miami, FL

Join the Discussion!

From your toolbar:



Share your experience
& opinions

Look for links
to resources

Type direct questions
for panelists

Waste Reduction at Hotels & Resorts





Florida Department of Environmental Protection's



Florida *Green Lodging* Program

ABOUT OUR PROGRAM

Launched in 2004, the Florida *Green Lodging* Program is an initiative of the Florida Department of Environmental Protection (DEP) that designates and recognizes lodging facilities that make a voluntary commitment to conserve and protect Florida's natural resources.

To become designated, facilities must conduct a thorough property assessment and implement a specified number of environmental practices in five areas of sustainable operations:

Sheena Chin-Greene is the Program Coordinator of the Florida *Green Lodging* Program. She has been a part of the Program since 2008.

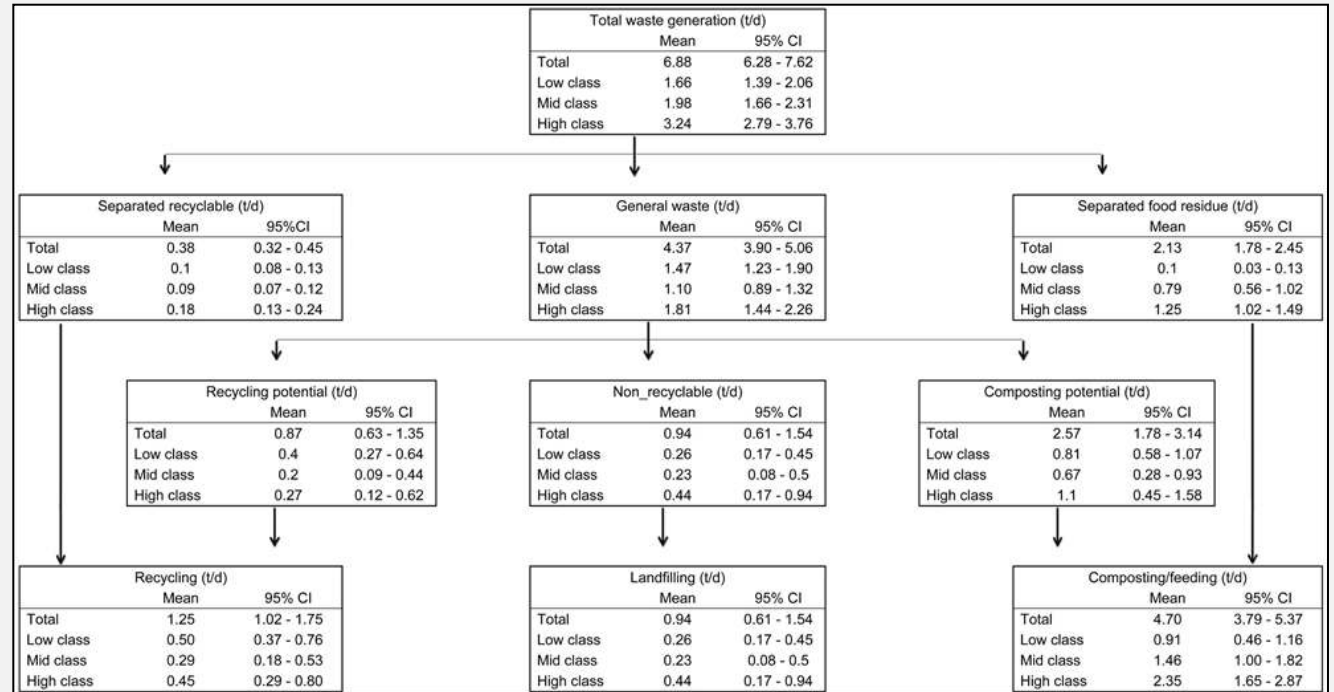


WASTE REDUCTION
BEST MANAGEMENT
PRACTICES



CONDUCT A FACILITY-WIDE WASTE AUDIT WITH YOUR WASTE SERVICE PROVIDER

Your garbage hauler can determine what percentage of your waste stream is recyclable and right-size your garbage and recycling dumpsters accordingly. By moving much of your garbage stream to a recycling stream, you can downsize the garbage service. The savings from downsizing your garbage service could more than pay for your recycling service fees.



TRACK WASTE GENERATION ON A REGULAR BASIS

The U.S. Environmental Protection Agency's (EPA) WasteWise Program offers a free web-based program to track your waste, recycling and recycle content purchasing. Waste tracking will allow the facility to obtain measurements and data to assist in the waste reduction efforts by highlighting outstanding generation issues.



<https://www.epa.gov/smm/wastewise>

REMOVE OR ELIMINATE THE STORAGE AND USE OF HAZARDOUS CHEMICALS

Although hazardous chemicals may be needed for certain appliances, try to move away from them where possible. Examples include switching from traditional cleaning chemicals to green cleaners. Green cleaners often have less stringent storage requirements than traditional cleaners and can lead to reduced exposure to harmful substances. Green Seal, EPA Safer Choice and ECOLOGO provide a list of certified green products.



REUSE WASTE
REDUCTION
BEST MANAGEMENT
PRACTICES



DONATE ANY EXCESS ITEMS,
SUCH AS FOOD, TOILETRY
ITEMS, FURNITURE,
ELECTRONICS AND LINENS TO
LOCAL CHARITIES OR OTHER
SOCIAL SERVICE
ORGANIZATIONS

Donate any items that can still be used to local charities or other social service organizations. This will extend the life cycle of these usable products instead of sending them to the landfill. If items cannot be donated to local charities, arrange for a system to sell the items to employees. Construction and demolition supplies can also be reused in this manner.





COMPOST EXCESS FOOD AND LANDSCAPE TRIMMINGS

In areas where excess prepared food items cannot be donated to local charities, compost these materials. As with excess food, landscape trimmings should not be sent to the landfill. These materials can be shredded or chipped and reapplied as soil amendments. Such services can be arranged through local agricultural and landscaping resources.

RECYCLING WASTE
REDUCTION
BEST MANAGEMENT
PRACTICES



DEVELOP AN ONSITE
RECYCLING PROGRAM
FROM AS MANY WASTE
MATERIALS AS POSSIBLE

Commonly recycled materials include aluminum, landscape waste, newspapers, cooking grease, food waste, glass, carpet, building materials, motor oils and liquids, plastic bottles and buckets, magazines and batteries. Recycling services for all the above may not be available in your area. Check with your local recycling coordinator on the availability of commercial recycling. You can find your local recycling coordinators on the DEP Recycling Program website.



LOCATE RECYCLING CONTAINERS AND BINS NEXT TO TRASH RECEPTACLES

The most successful recycling programs make it easy to participate. Locating recycling containers next to trash receptacles will lead to an increased success rate for the recycling program. Also, provide easy instructions and directions where these bins are located to both guests and staff.





Sheena Chin-Greene
GreenLodging@FloridaDEP.gov
850-245-2116

Live Poll #1

What is your role with hotel / resort sustainability? *(check one only)*

- Directly work on sustainability issues at individual property (ies)
- Work on hotel/ resort sustainability on a corporate level
- Other role with hotel/ resort, indirect interest on sustainability
- Support hotel/ resort sustainability as govt. agency, NGO, consultant, etc.
- Sustainability role in unrelated sector

A wide-angle landscape photograph of a Yellowstone National Park canyon. A river flows through the center, with a waterfall visible in the distance. The canyon walls are rugged and feature various mineral deposits in shades of yellow, orange, and brown. The background is filled with dense evergreen forests under a clear blue sky.

Incorporating Waste Reduction into Hotel & Resort Operations

September 20th, 2021

YELLOWSTONE

NATIONAL PARK LODGES

Legendary Hospitality by Xanterra

Waste Management in
Yellowstone



1. Yellowstone Operational Overview
2. How it was
3. How it is
4. How we do it
5. Questions

Summary of Operations*

- 3,200 Employees
- 2,100 Rooms
- 1,400+ Campground Sites
- 350 RV Sites
- 7 Full-Service Dining Rooms
- 3 Cafeterias
- 7 Quick Service Food
- 2 Corral Operations
- 9 Gift Shops
- Bridge Bay Marina
- 285K Room Nights
- 17,000 Meals per Day
- 4M Pounds of Laundry

*in a typical year





Historic Waste Management Practices





Historic Waste Management Practices



Historic Waste Management Practices



How we're doing...

	2020	2019	2018	2017	2016
Recycling	1,267,670	1,487,956	1,678,582	2,092,792	1,787,058
Compost	247,392	1,288,254	1,291,844	1,299,128	1,202,220
Landfill	1,680,546	1,635,130	2,514,841	2,277,539	2,355,590
Diversion	47%	63%	54%	60%	56%



“Legendary Hospitality with a Softer Footprint”



Waste Infrastructure





What Goes Where?



♻️ RECYCLE

Metal
Glass
Plastic
Paper
Cardboard



🍴 COMPOST

Food Waste
Tea Bags
Beverage Cups (Hot & Cold)
Paper Towels & Tissues
Disposable To-Go Items



🗑️ TRASH

Everything Else!
Including:
Aluminum Foil
Plastic Wrap
Snack Bags & Wrappers



For more information, visit YellowstoneNationalParkLodges.com











Continual Improvement



What does the future hold?

A scenic view of a Yellowstone National Park landscape. In the foreground, a river flows through a rocky canyon. In the middle ground, a waterfall cascades down a rocky cliff. The background features a dense forest of evergreen trees under a clear blue sky.

Thank you!

YELLOWSTONE
NATIONAL PARK LODGES

Legendary Hospitality by Xanterra

Dylan Hoffman
Director of Sustainability
dhoffman@xanterra.com

Live Poll #2

What diversion practices are in place/ common at properties you work with or advise? *(check any that apply)*

- Recycling in rooms
- Recycling in public areas
- Food composting or donations from dining operations
- Donation of unused toiletries, single use items
- Donation or recycling for mattresses, furniture, linens, etc.

Share details in the chat

Waste Reduction in Hotel & Resort Operations The Circular Economy

September 30, 2021



K. Denaye Hinds
Managing Director



- Minority / Women Business Owner
- #BossMom

- Sustainable Tourism Destination
- Strategic Sustainability Strategies
- Curated Conversations

Presentation Outline

Part 1: What is the Circular Economy?

Part 2: What is the Impact?

Part 3: Measuring Progress & Next Steps

Part 4: Wrap Up



What is the Circular Economy?

Economic System that tackles global challenges:

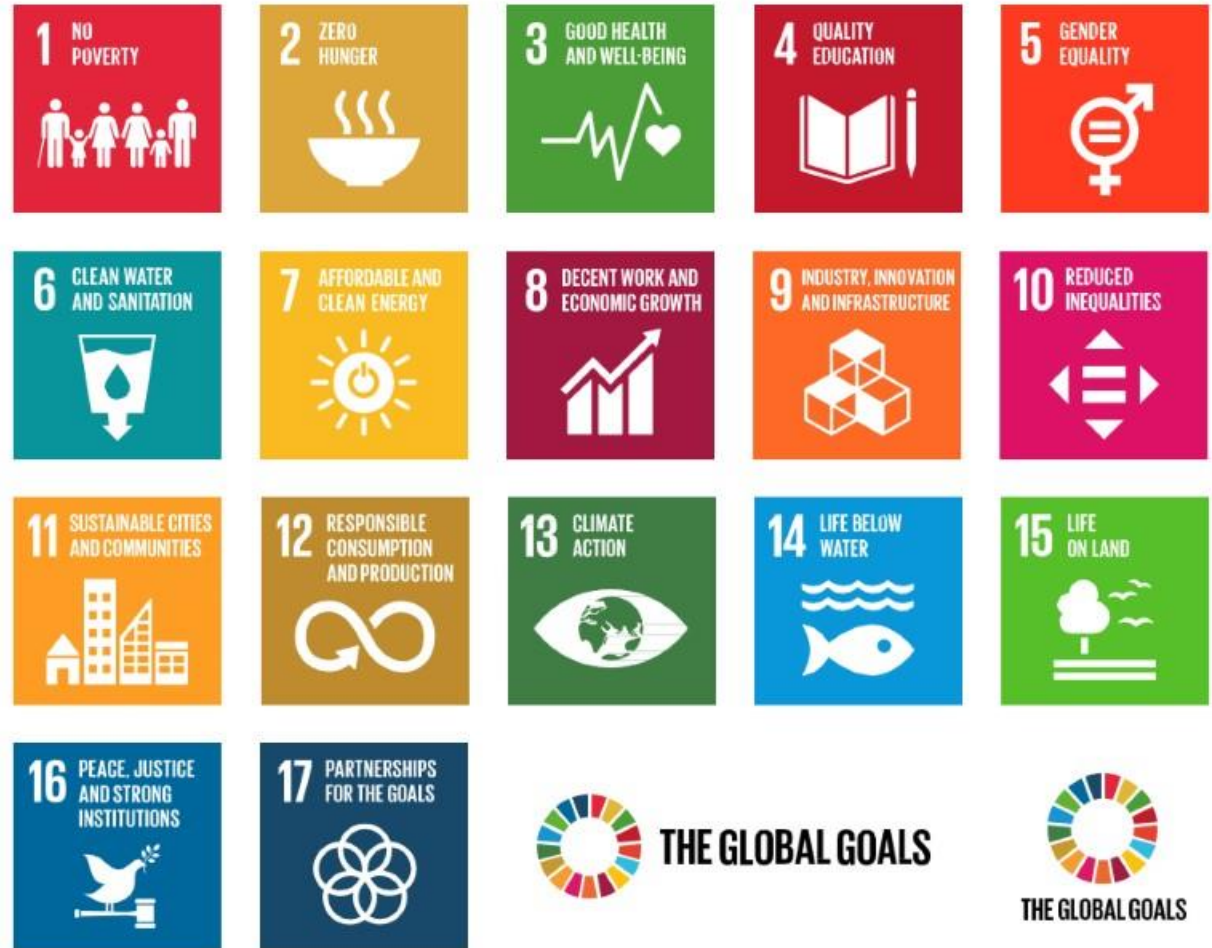
- Climate Change
- Biodiversity Loss
- Waste
- Pollution



What is the Impact?

The Sustainable Development Goals (SDGs) are the world's most pressing problems.

We design solutions to create IMPACT locally & globally.



Priority SDGs

Putting into practice the principles of a Circular Economy will contribute to the advancement of the Sustainable Development Goals & Produce ROI



#12 Priority SDG

Responsible Consumption & Production



#13 Priority SDG

Climate Action



#7 Priority SDG

Affordable & Clean Energy



Distribution

Production
remanufacturing

Consumption

Design

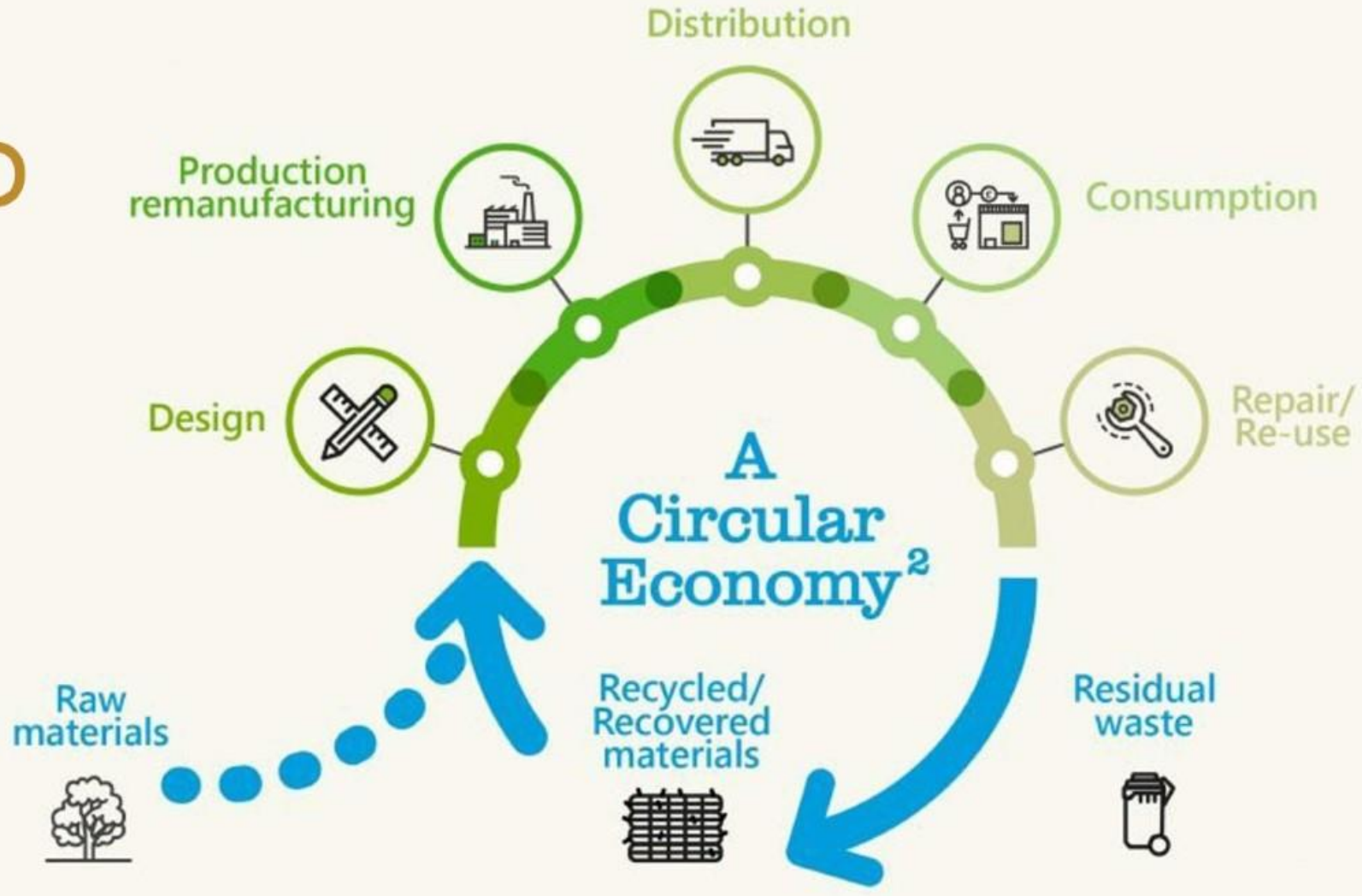
Repair/
Re-use

A
Circular
Economy²

Raw
materials

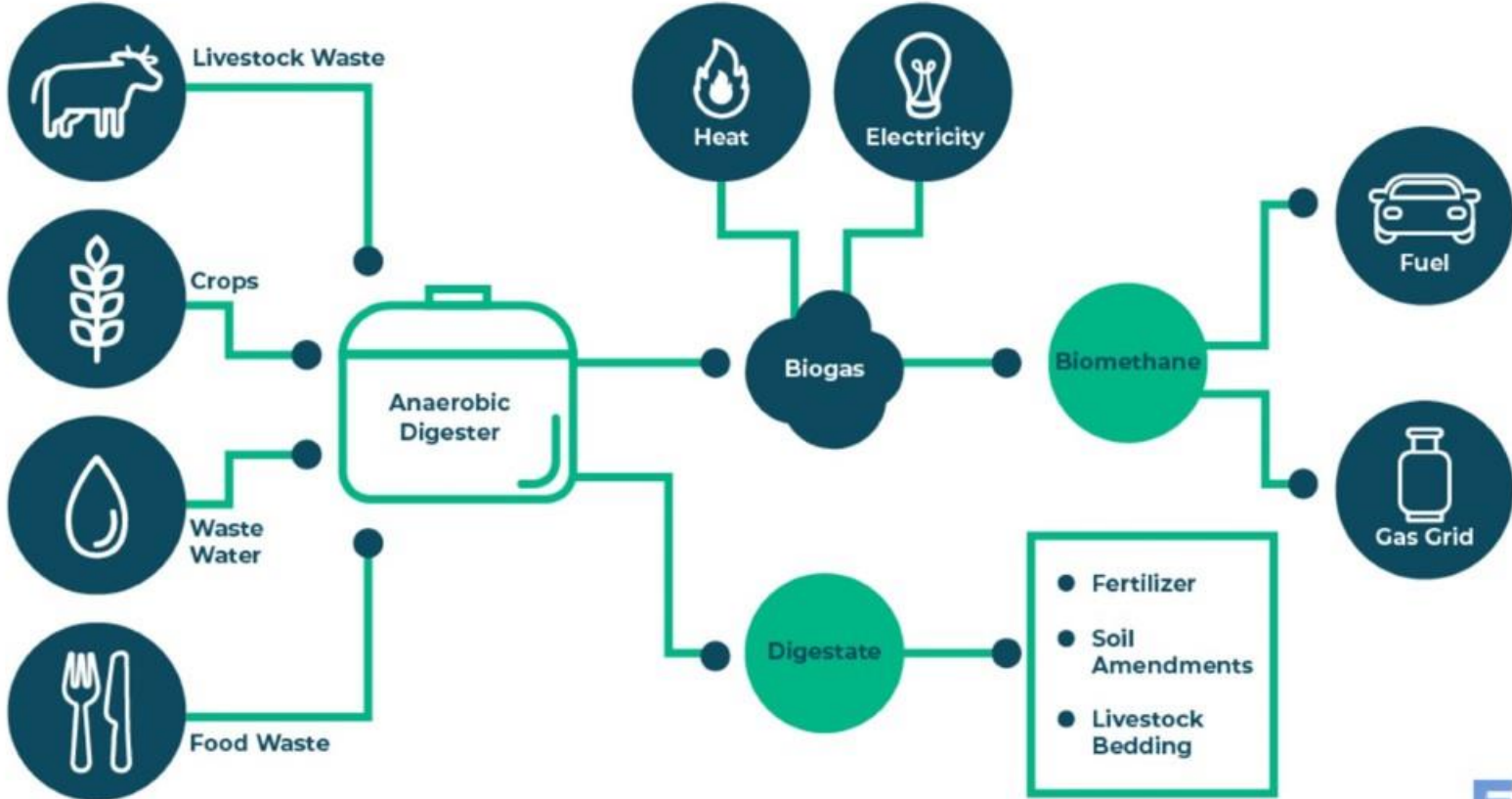
Recycled/
Recovered
materials

Residual
waste



RENEWABLE NATURAL GAS CAPTURE

How It Works: The Process of Creating Biomethane



100%

Trained Responsible & Sustainable
Procurement Supplier Network
by 2030

50%

Local Sourcing for Products & Food
by 2030



61.5%

Waste Diversion Rate

21%

Reduction in Scope 3 Emissions
by 2035

MELIÀ
HOTELS & RESORTS

Measuring Progress

Create a habit of measuring, monitoring, tracking & enhancement



Key Indicator	Action / Project	Data / Impact
Understand Waste Stream	Strategic Waste Audit	<ul style="list-style-type: none">• Waste make-up• Detail sourcing
Sustainable Procurement	Analysis of Supply Value Chain	<ul style="list-style-type: none">• Cost Benefit• Manufacturing• GHG Emissions• Waste• Social Equity
Responsible Waste Solutions	Optimize Reduction / Disposal Strategies	<ul style="list-style-type: none">• Recycling• Composting• Take-Back / Reuse• Energy

Next Steps

Set Goals & Create Commitments

- 01 30% Waste Reduction
By 2030
- 02 40% Responsible Supply Chain
By 2040
- 03 Innovative & Alternative
Solutions
Be creative, source unique partnerships

Wrap-Up & Key Take Aways

#1

You have influence!

- Create market demand

#2

Focus on engagement & ROI

- Involve People they will create your ROI

#3

Go beyond linear, think circular

- Everything has a footprint
-

Connect with Me

K. Denaye Hinds
Managing Director

305.613.1952
www.justataad.com
reachus@justataad.com
@justataad  



Live Poll #3

What upstream/ circular economy practices are in place/ common at properties you work with or advise? *(check any that apply)*

- Replace single use toiletry bottles with dispensers
- Work w/ suppliers to reduce packaging, other source reduction
- Set Environmentally Preferable Purchasing (EPP) policies
- Reduce food waste in BOH kitchen prep
- Other (*share in chat*)

Panel Discussion



Alec Cooley

Senior Advisor
Busch Systems
Charleston, SC



Sheena Chin-Greene

Green Lodging Program Manager
Florida Dept. of Environmental
Protection
Jacksonville, FL



Dylan Hoffman

Director of Sustainability
Yellowstone National Park /
Xanterra Parks & Resorts
Teton County, WY



K. Denaye Hinds, LEED AP

Managing Director
JustaTAAD, LLC
Miami, FL

Online Resources

Visit: buschsystems.com/blog


Program Resources

- Download presentation slides
- Recording
- Links to speaker resources
- Responses to Q&A

Blog Series

BLOGS | ENVIRONMENT

9 KEY TIPS FOR BUILDING AN EXCEPTIONAL HOTEL/RESORT RECYCLING PROGRAM



SEPTEMBER 21, 2021 | BY MARISSA CALDWELL

We've been building exceptional lodging recycling & waste management programs for over 35 years. Here are our 9 key tips to help your hotel/resort build an exceptional waste management program – saving you money, as well as helping to preserve the environment. Let's start with the facts. Hotels are chief consumers of resources, and they contribute immensely to the generation of waste: According to Open Access Government, hotels produce, on average, 320,000 tons of waste each year. According to a 2018 study conducted by the...

[CONTINUE READING](#)

READING TIME: 6 MIN

SHARE: [f](#) [t](#) [p](#) [h](#)

Thank You to Our Panelists!



Alec Cooley

Busch Systems

alecc@buschsystems.com



Sheena Chin-Greene

FL Dept. of Environmental
Protection

GreenLodging@FloridaDEP.gov



Dylan Hoffman

Yellowstone National Park /
Xanterra Parks & Resorts

dhoffman@xanterra.com



K. Denaye Hinds, LEED AP

JustaTAAD, LLC

reachus@justaad.com

Share your Feedback!

Did this program meet your expectations?

- Met expectations
- Exceeded expectations
- Failed to meet expectations

Look for an email to share written comments

Stay Tuned for Product Demonstration